

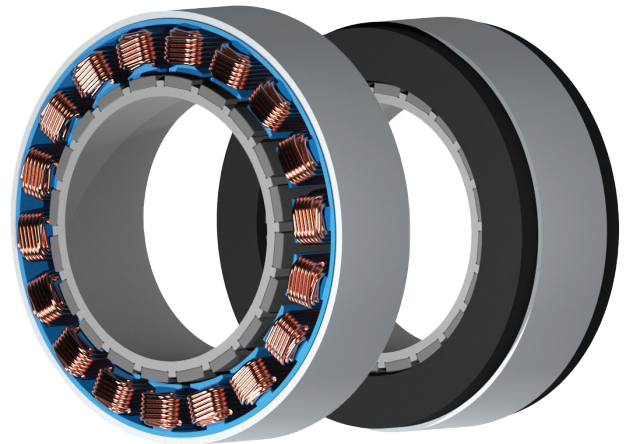


Frameless Torque Motors FT SERIES

Compact and high torque motors.

Allied Motion, an Allient Company introduces Frameless Torque Motors featuring high torque density, lightweight construction, and precision motion control, they set a new standard for efficiency and reliability in high-performance motion systems.

Engineers and manufacturers need compact, high-torque solutions that integrate seamlessly without sacrificing performance. Our permanent magnet brushless frameless motors deliver the perfect balance of power, efficiency, and flexibility, designed for direct integration into your system.



KEY FEATURES & BENEFITS

Torque:

High Torque density.

Efficiency:

80% to 90% over a wide range of operating points.

Optimum Heat Dissipation (Option):

Engineered for efficient thermal management.

Compact Design:

Design optimized for low cogging. SPM Motor type.

OPTIONS & ACCESSORIES

Stator:

Overmolded.

Connection:

Integrated terminals or flying leads.

TYPICAL APPLICATIONS

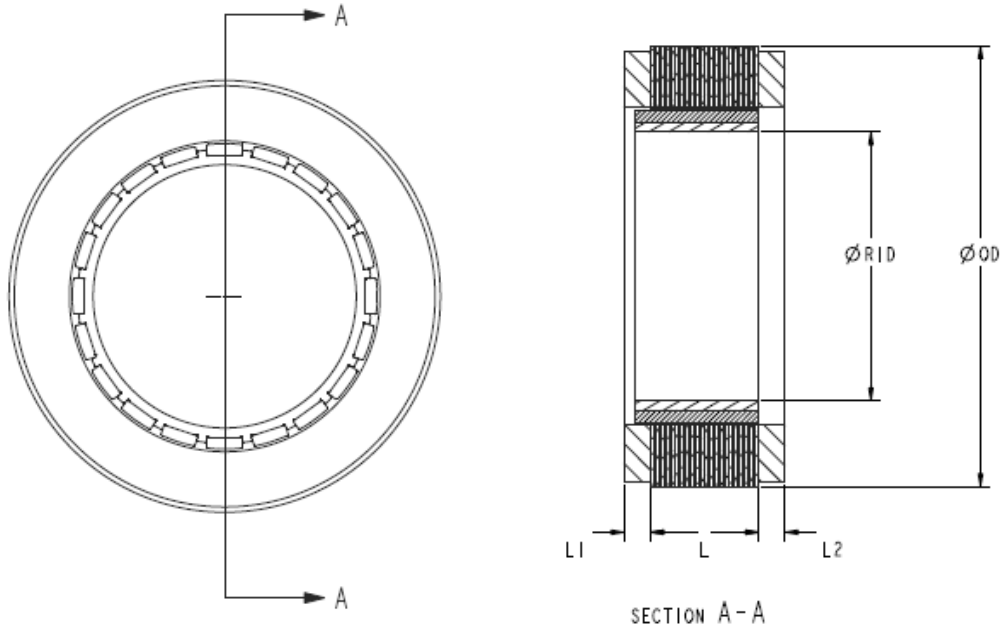
The FT Series are well suited for a variety of high performance applications:

Including

- Robotics
- Unmanned aerial vehicles (UAVs)
- Torque assistance for e-bikes
- Thermal management (pumps and power tools)
- Autonomous mobile robots (AMRs)
- Material handling systems
- Medical equipment



DIMENSIONS



PERFORMANCE

