



Frameless Servo Motors FS SERIES

Low cogging and thermal enhanced.

Our Permanent Magnet Brushless Motor (PMBL) solutions are optimized to achieve the lowest friction, cogging and ripple torque, enabling low noise & vibration, and smooth system control.

A unique skewed stator design combined with our patented in-slot winding technology and overmolded solutions are our key differentiating factors when target is smooth torque, efficient thermal management and deep integration in the system. Whether it is a Stator & Rotor, or a complete Motor, our innovative designs and technology will help you with your new compact and reliable electrified motion system.



KEY FEATURES & BENEFITS

Cogging Torque:

Maximum of 10 mN.m (typical) up to 20 mN.m.

Efficiency:

80% to 90% over a wide range of operating points.

Optimum Heat Dissipation:

Engineered for efficient thermal management.

Design:

Compact design ideal for constrained environments. Skewed stator reduces cogging and torque ripple for smoother, quieter operation. Shaft or hollow rotor.

IPM:

IPM motor delivers high torque density.

OPTIONS & ACCESSORIES

Winding:

12V, 24V, and 48V winding options.

Connection:

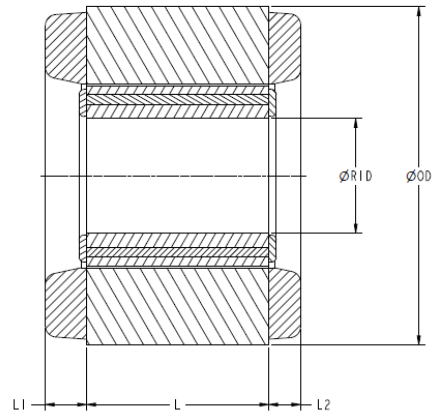
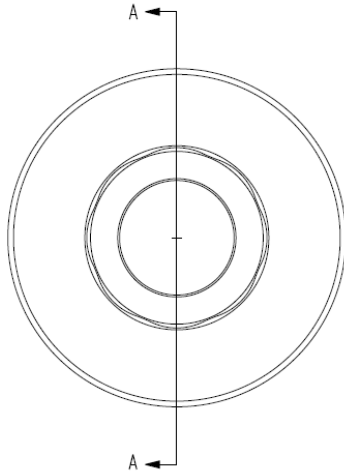
Integrated terminals or flying leads.

TYPICAL APPLICATIONS

The FS Series are well suited for a variety of high performance applications including steering and braking for passenger vehicles, torque assistance for e-bikes, pumps for vehicles and power tools, autonomous mobile robots (AMRs), unmanned aerial vehicles (UAVs), robotics, material handling systems, and medical equipments.



DIMENSIONS

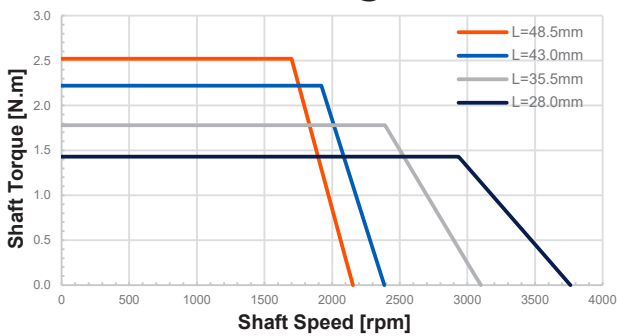


SECTION A-A

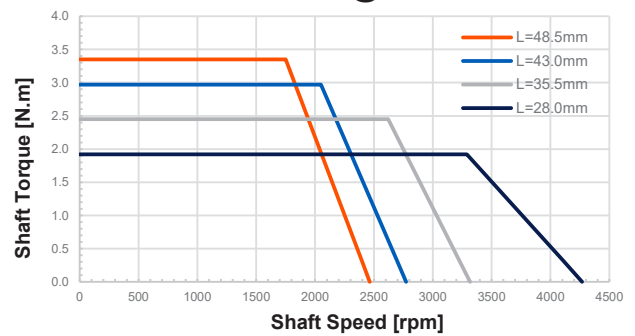


PERFORMANCE

OD=82mm @ 12V



OD=90mm @ 12V



OD = 48.5mm

